



BIOCYTOGEN

Stock code:02315.HK

Your partner
from targets
to therapeutics



RenBiologics



BioMice



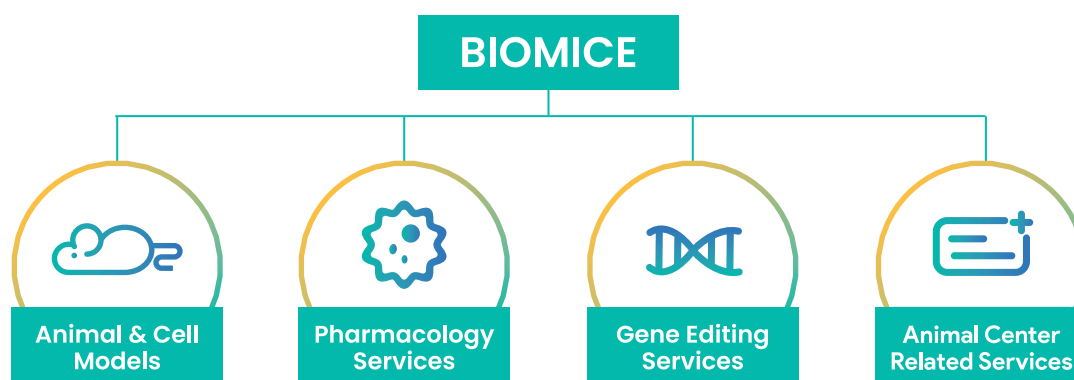
Our Vision

To become a global headstream of new drugs

Our Mission

To discover, develop and deliver new medicines
through innovative technologies that benefit human health

BioMice: Innovative models to accelerate drug discovery



Partnerships with all of the Top **10** MNCs

BioMice's innovative animal models sold in **20+** countries and regions

Gene editing services

Stem cell lines in C57BL/6 background established in Biocytogen

Increase the efficiency of knock-in by 10-20 fold than CRISPR/Cas9

Unique chromosome editing at Mb level

ESC/HR

CRISPR/EGE

SUPCE

Three gene-editing technologies



1200+ publications used our gene editing service/gene edited models



4900+ Gene editing projects delivered for clients

Animal & cell models

3300+ Gene-edited animal and cell models developed

800000+ Animal models annual supply capacity

150000+ Cages in animal center with AAALAC

900+ Target humanized mice

> Humanized GPCR models

A2AR	C5AR1	CCL1	CCR2	CCR7	CX3CR1	CXCR6	FZD7	GPR40	LGR4
ADGRG2	C5AR2	CCL2	CCR3	CCR8	CXCR2	ETAR	GCGR	GPR55	MC4R
ADORA2B	CALCRL	CCL20	CCR4	CCR9	CXCR3	F2RL1	GLPIR	GPR75	S1PR1
BDKRB2	CB1	CCL22	CCR5	CGRP	CXCR4	FSHR	GPR20	GPRC5D	SUCNR1
C5	CB2	CCR1	CCR6	CRTH2	CXCR5	FZD5	GPR35	HCAR1	VPAC1

> Humanized immune-checkpoint models

4-1BB	CD112	CD24	CD24	CD4	CD79B	DLL1	GPC3	LILRB1	NKG2D	RAGE	VSIG4
4-1BBL	CD155	CD248	CD248	CD40	CD80	DLL3	HVEM	LILRB2	NKP46	RANKL	VSIR
ADRB1	CD160	CD27	CD27	CD40L	CD89	DR4	ICAM1	LILRB3	NOTCH1	ROBO4	
ALCAM	CD16A	CD28	CD28	CD43	CD93	EBI3	ICAM3	LILRB4	NRP1	RTN4R	
AMHR2	CD16B	CD30	CD30	CD44	CD94	F11R	ICOS	LRRC33	OX40	SELE	
ANTXR2	CD180	CD32A	CD32A	CD45	CDCP1	FAP	ICOSL	LY6E	OX40L	SELL	
AXL	CD19	CD32B	CD32B	CD47	CEACAM1	FGL1	ITGB3	MADCAM1	PD-1	SELP	
B2M	CD2	CD33	CD33	CD48	CLEC10A	FGL2	ITGB8	MERTK	PDGFB	SIGLEC10	
B7-H3	CD20	CD36	CD36	CD5	CLEC14A	FOLR1	KAAG1	MICA	PDGFRA	SIGLEC15	
B7-H4	CD200	CD37	CD37	CD52	CLEC9A	FOLR2	KLRG1	MRC1	PDGFRB	SIGLEC7	
BAMBI	CD200R	CD38	CD38	CD6	CSPG4	FOLR4	LAG3	NCR2	PD-L1	SIGLEC9	
BCMA	CD22	CD39	CD39	CD69	CTLA4	GARP	LAIR1	NCR3	PDPN	SIRPA	
BST2	CD226	CD3E	CD3E	CD70	CX3CL1	GAS6	LGALS9	NKG2A	PSGL-1	TF	
BTLA	CD23	CD3EDG	CD3EDG	CD73	DDR1	GITR	LIGHT	NKG2C	PVRIG	TGFB1	

> Humanized cytokines models

ADIPOQ	CCL4	CSF3	GDF8	IGFBP2	IL15RA	IL21R	IL33	INHBE	MIF	TFPI
ADM	CCL5	CXCL1	GEP	IGFBP7	IL17A	IL22	IL36A	KIT	OSM	TNFA
AFP	CCN1	CXCL10	GFRAL	IL10	IL17B	IL22RA1	IL36R	KITLG	OSMR	TSLP
ANG2	CCN2	CXCL13	GHRL	IL10RA	IL17F	IL23A	IL4	KLK2	PAI1	TSLPR
ANGPTL3	CCN4	CXCL16	GRP	IL10RB	IL17RA	IL25	IL4RA	KLK3	PCSK9	TWEAK
ANGPTL4	CD14	CXCL3	IFNAR1	IL11	IL17RB	IL26	IL5	LAIR1	PTHrP	VEGFA
ANGPTL8	CD59	CXCL4	IFNAR2	IL11RA	IL17RC	IL27	IL5RA	LIF	RNASE4	VEGFR1
APRIL	CD5L	CXCL7	IFNB1	IL12A	IL18	IL27RA	IL6	LPA	RSPO1	VEGFR2
BAFF	CETP	DKK1	IFNG	IL12B	IL18BP	IL2RA	IL6R	LTA	RSPO3	VWF
BAFFR	CFB	EPO	IFNGR1	IL12RB1	IL19	IL2RB	IL6ST	LTB	S100A8	WNT3A
C3	CFD	FCER1A	IFNGR2	IL12RB2	IL1B	IL2RG	IL7R	LTBR	S100A9	
CCL11	CSF1	FGF21	IgE	IL13	IL1RACP	IL3	IL8	LYPD3	SOST	
CCL24	CSF1R	FGFR3	IGF1R	IL13RA1	IL2	IL31	IL9	MAG	SPPI	
CCL3	CSF2RB	GDF15	IGF2R	IL15	IL20	IL31RA	IL9R	MASP2	TEK	

> Other humanized models

ADA	CIQ	CD9	DPP3	FXII	ITGA5	HLA-G	MET	ORAI1	SEMA7A	TGM2	XDH
ADAMI5	CAIX	CD95	EGFL7	GFRA1	ITGA6	LAT1	MFGE8	P2RX3	SERPINF2	TIMP1	α4β7
ADAMI7	CD105	CD98HC	EGFR	GFRA3	ITGA9	LGALS3BP	MMP9	PGLYRP1	SHH	TLR3	
ADAM9	CD133	CDH1	EMP2	GPC1	ITGAL	LRP10	MSLN	PLAUR	SIGLEC8	TLR4	
ADAMTS5	CD147	CDH17	EPCAM	HAMP	ITGAV	LRP5	MST1R	PLXNB2	SLAMF7	TLT1	
ALB	CD151	CDH3	EPHB3	HBEGF	ITGB1	LRP6	MUC1	POSTN	SLC16A3	TLT2	
AMIGO2	CD163	CFP	EREG	HER2	ITGB7	LRRC15	MUC17	PSCA	SLC43A2	TNC	
AOC3	CD1D	CLDN2	EVA-1	HER3	JAG1	LSR	NECTIN4	PSMA	SLPI	TPBG	
APOC3	CD209	CLEC5A	FcRn	HMMR	JAG2	LUCA2	NGAL	PTH	SRBI	TROP2	
APOE2	CD300A	CLU	FGB	IBSP	JAM3	MARCO	NGF	PTK7	SSTR2	TTR*V30M	
APOE4	CD55	CSPG5	FGFRL1	ILT7	L1CAM	MCAM	NPR1	RETN	TCIRG1	TYRO3	
AREG	CD63	CTSG	FLT3LG	ITGA1	HLA-A11.1	MDK	NTRK1	RGMA	TDGF1	UPA	
BDCA2	CD68	DLK1	FSHB	ITGA2	HLA-A24.2	MDR1	NTRK2	ROR1	TEM7R	UPAR	
BPIFA1	CD79A	DLL4	FSTL3	ITGA4	HLA-A3.1	MELTF	NTRK3	SEMA4D	TFRI	VLDLR	

60+ Immunodeficient mice	800+ Gene-edited mice	200+ Cell lines
<ul style="list-style-type: none"> B-NDG series of immunodeficient mice Other immunodeficient mice & Rats 	<ul style="list-style-type: none"> Cre mice Target knock-out mice Other gene edited mice Aged mice 	<ul style="list-style-type: none"> Humanized cell lines Reporter cell lines

B-NDG mice	B-NDG B2m KO mice plus	B-NDG hIL15 mice	B-NDG HLA-A2.1 mice
B-NDG hIL6 mice	B-NDG hTHPO mice	B-NDG hCSF1/hTHPO mice	B-NDG MGMT3 mice
B-NDG hFcRn mice	B-NDG MHC I/II DKO mice plus	B-NDG hSIRPA mice	B-NDG hSIRPA/hCD47 mice

> TAA Humanized Cell Lines

hCLDN18.2 MC38	hHER2 MC38	hDKK1 MC38	hCD47 MC38	hHER2 EL4	hRORI MC38	hLILRB4 MC38
hFAP MC38	hAMHR2 MC38	hGPC3 MC38	hTF MC38	hAMHR2 ID8	hFNI4 MC38	hTROP2 MC38
hGPRC5D MC38	hBCMA MC38	hMSLN ID8	hNECTIN-4 MC38	hCXCR4 MC38	hTPBG MC38	hTPBG B16-F10

Pharmacology and Translational Research Services

4500+ Pharmacology programs for our clients

> In vivo Pharmacology Platform

Tumor (Allograft & xenograft model)	
Target humanized models	Immune system humanized models
Syngeneic model (Subcutaneous/ Orthotopic)	PBMC reconstitution model
Spontaneous tumor model	CD34+ HSC reconstitution model
	NK reconstitution model
Autoimmune disease & inflammation models	
RA (Rheumatoid Arthritis) / CIA (Collagen Induced Arthritis) model	IBD (Inflammatory Bowel Disease) model
Osteoporosis Model	SLE (Systemic Lupus Erythematosus) model
EAE (Experimental Autoimmune Encephalomyelitis) model	DTH (Delayed Type Hypersensitivity) model
AD (Atopic Dermatitis) model	CKD(Chronic Kidney Disease)/(5/6 Nephrectomy) model
Asthma model	Pulmonary fibrosis model
Pneumonia model	Itchiness model
Psoriasis model	Alopecia areata model
Metabolic disease models	
Obesity and diabetes model	Acute liver injury model
NAFLD/NASH model	Atherosclerosis model
Liver fibrosis model	Hyperuricemia model

> PD/PK Platform

Receptor occupancy (RO) analysis	Blood concentration analysis
Immune cell analysis	Immunogenicity analysis
Tumor infiltrating lymphocytes analysis	Tissue distribution analysis
Multiple cytokine analysis	
Tumor microenvironment analysis	

> Non-GLP Toxicology Platform

Histopathology toxicology tests	Clinical observation(Score)	Blood toxicology tests
Toxicokinetic (TK)	Cytokine release syndrome (CRS)	

> In vitro Pharmacology Platform

Model Validation	Screen	MOA	Toxicology
Binding assay	Killing assay	ADCC/ADCP/CDC	Inflammation/ Cytokines assay
Blocking assay	Internalization	MLR/Polarization	
Bioactivation assay			

> Large animal (canine) translational research platform

In vivo efficacy	PK/PD	Non-GLP toxicology
------------------	-------	--------------------

RenBiologics: Our Fully Human Library. Your Pipeline.



mAb platform

RenMab™

- Target KO strategy
- Great diversity & affinity
- Novel binding epitopes
- Multi-species cross-reactivity



BsAb platform

RenLite®

- Common light chain
- Convenient assembly
- High purity and good developabilities



BsADC platform

RenLite®

- 200+ TAA targets
- Good developabilities
- Increased potency & reduced toxicity



Nanobody platform

RenNano®

- Good permeability
- Small and good building blocks for bi-/multi-specific Ab, CAR-T, etc.



TCR platform

RenTCR™

- Good T-cell immune response
- Discovery of high-affinity antigen-specific TCR
- Novel epitope discovery



TCR-mimic platform

RenTCR-mimic™

- Intracellular TAAs
- High specificity to the target/HLA complex



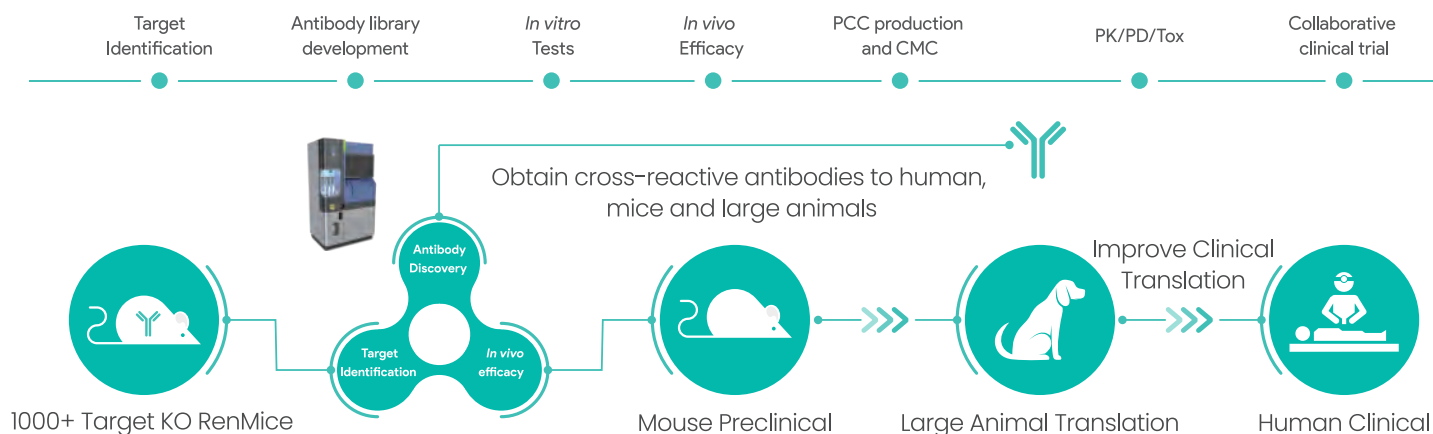
GPCR platform

RenMice® KO

- Targeting challenging GPCRs
- Targeting complex transmembrane structure

Streamlined Antibody Discovery

A large-scale antibody drug development project for 1000+ potential drug targets using target knockout RenMice.



Fully Human Antibody Library Against 1000+ Targets

400k

Fully-human antibody sequences

40+

PCC

~150

Partnerships

20+

Dual-TAA targeting BsADCs

SEZ6×B7-H3, PTK7 x TROP2, FOLR1 x MUC1, etc.

30+

Autoimmune projects

OX40 x OX40, CD40, TNFSF15, OSMR, etc.

200+

TAA-targeting antibody backbones

GUCY2C, CDCP1, PTK7, CDH17, SEZ6, B7-H3, etc.

10+

TCR-mimic antibodies targeting

CD3e x GPI100, WT1, KRAS, AFP, NY-ESO-1, etc.

200+

Nanobodies targeting

TFR1, 4-1BB, CD3, BCMA, etc.

70+

mAb/BsAb programs targeting GPCRs

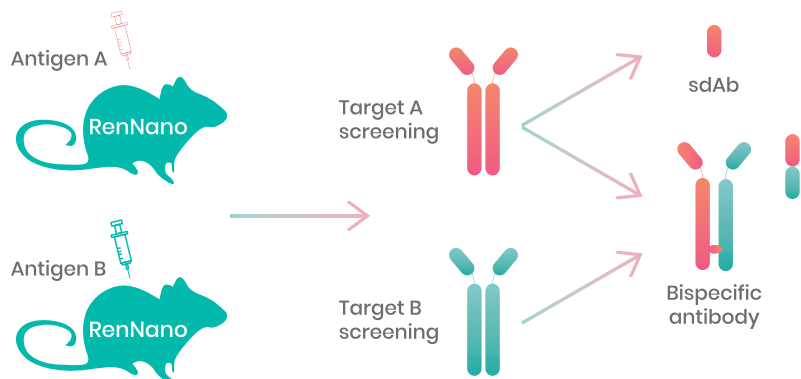
CCR8, GPRC5D, LGR5, CCR2 (Metabolism), etc.



Nanobody Platform

RenNano to develop heavy-chain-only antibodies (HCAbs) or nanobodies

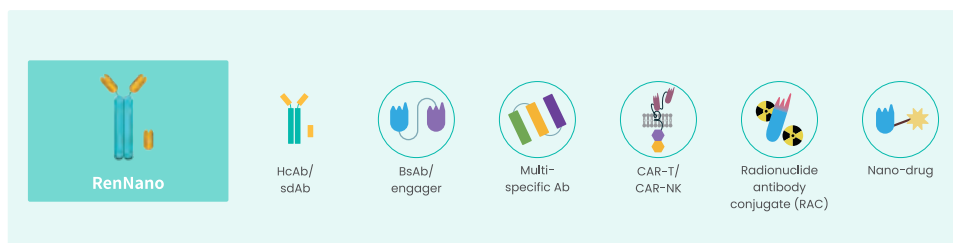
Advantages



- Recognizing hidden epitopes
- Good hydrophilicity and penetration ability
- Robust immune response
- Diversified heavy chain repertoire
- High binding affinity at nanomolar range

Nano 100 Project

The "Nano 100 Project" aims to develop fully human nanobody drugs using RenNano mice for more than 100 targets, including tumor associated antigens (TAAs), GPCRs, immune-checkpoints, cytokines, and factors related to neurological diseases.

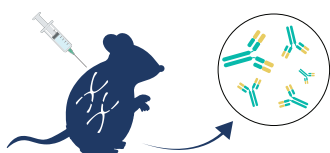
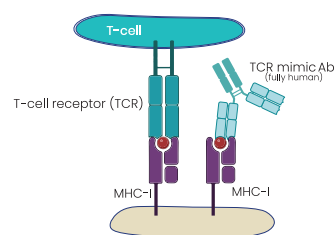


Nano
100



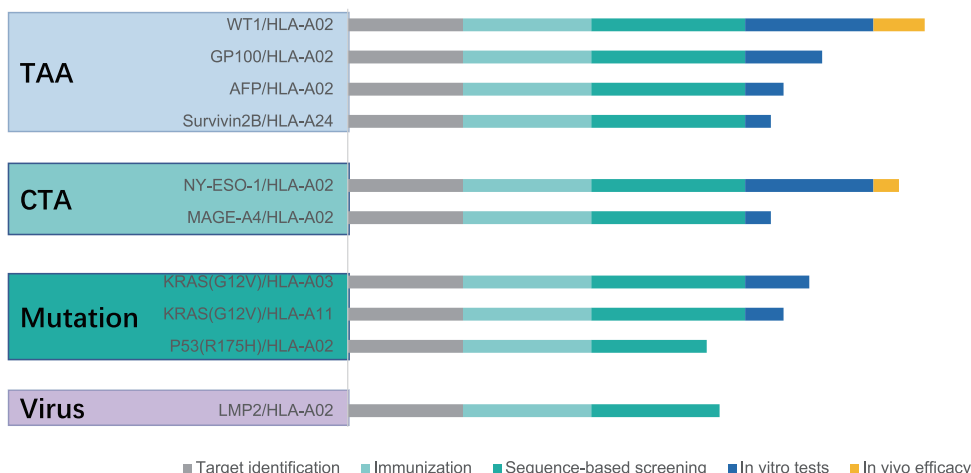
TCRmimic Antibody Platform

TCRmimic Antibody for the detection of intracellular tumor associated antigens



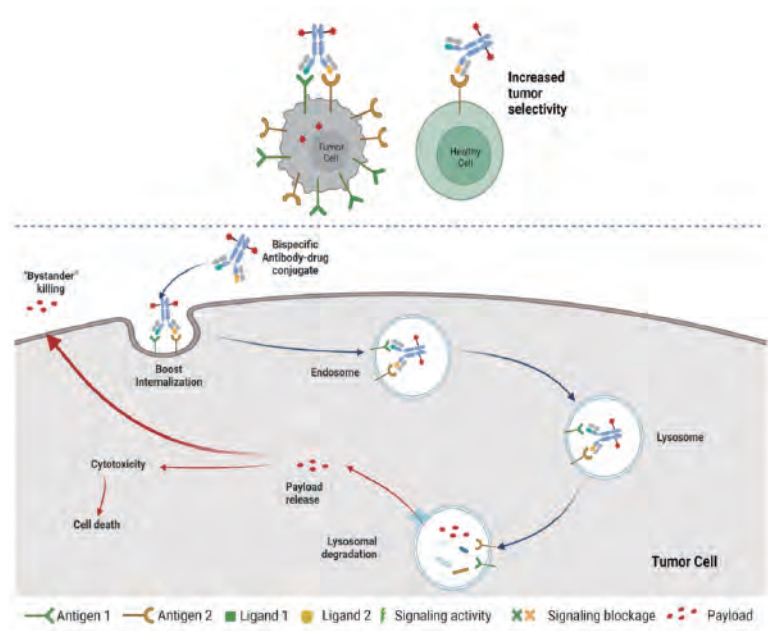
Immunization of HLA/RenMice

Progress of TCRm Antibodies

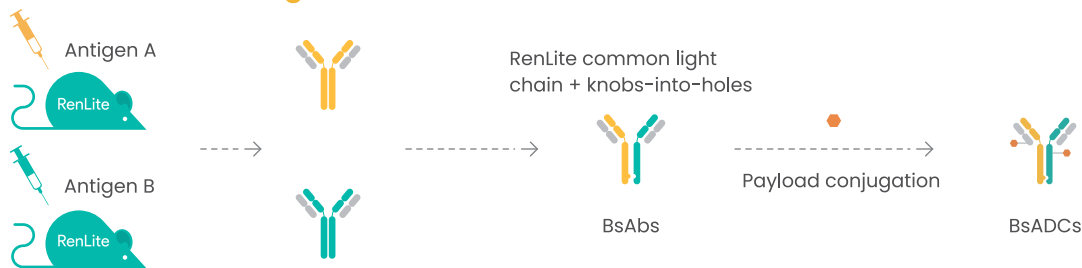


Biocytogen's BsADC Platform

Advantages of bsADC



Construction of bsADC using RenLite



200+ TAA-targeting backbones for plug & play

MUC1

5T4

PTK7

GUCY2C

SEZ6

HER3

FOLR1

CEA

PSMA

HLA-G

LIV-1

ROR1

B7-H3

CDH3

MUC16

etc.

20+ Ongoing bsADC programs

Target(s)	Immunization	Discovery			Preclinical	IND	Phase I	Status
		Hits selection	Leads selection	Candidate selection				
HER2 x TROP2 (YH012)								Partnered
EGFR x MET (DM005)								Partnered
TROP2 x EGFR (DM001)								Partnered
HER3 x MUC1 (DM002)								Partnered
EGFR x MUC1 (BSA01)								Partnered
PTK7 x TROP2								
HER3 x MET								
PTK7 x EGFR								
EGFR x HER3								
B7-H3 x PTK7								
EGFR x 5T4								
FOLR1 x MUC1								
5T4 x MUC1								
SEZ6 x B7H3								
FOLR1 x MUC16								
Nectin-4 x TAAs								
FAP x TAAs								
CD71 x TAAs								
CDCP1 x TAAs								
ADAM9 x TAAs								
CDH6 x TAAs								
ITGB6 x TAAs								
MSLN x TAAs								
FOLR1 x SLC34A2								

Clinical Assets Available for Partnership

Product candidate	Target(s)	Combination	Indication	Pre-clinical	IND	Phase I	Phase II	Phase III	Rights	Partner
Clinical-stage Drug Candidates	★ YH001	CTLA-4	PD-1	Solid tumors	Australia				Global	
			Monotherapy	Solid tumors	China					
	YH002	OX40	YH003+YH001	Intratumoral immunotherapy	Investigator Initiated Trials					Syncromune, Inc.
	★ YH003	CD40	PD-1+chemo	Pancreatic ductal adenocarcinoma (1L&2L)	Global MRCT				Global	
			PD-1+chemo	Mucosal melanoma	China					
			PD-1+YH001	Solid tumors	Global MRCT					
	YH004	4-1BB	Monotherapy	Solid tumors	Australia and China				Global	
	YH008	PD-1 x CD40 BsAb	Monotherapy	Solid tumors	China				ex-Greater China	Chipscreen NewWay (Greater China)

Notes: ★ Core Product Candidate Out-licensing/Co-development Oncology

Global partnerships for antibody therapeutics R&D

~150 asset-based collaborations
~50 target-nominated RenMice licensing projects

Assets-based partners



RenMice® platform-based partners



Clinical pipeline-based partners



Biocytogen Pharmaceuticals (Beijing) Co., Ltd.

For preclinical products & services: info@bbctg.com.cn

For drug assets and platforms: BD-Licensing@biocytogen.com

+86 010-5696 7680 | info@bbctg.com.cn | en.biocytogen.com.cn